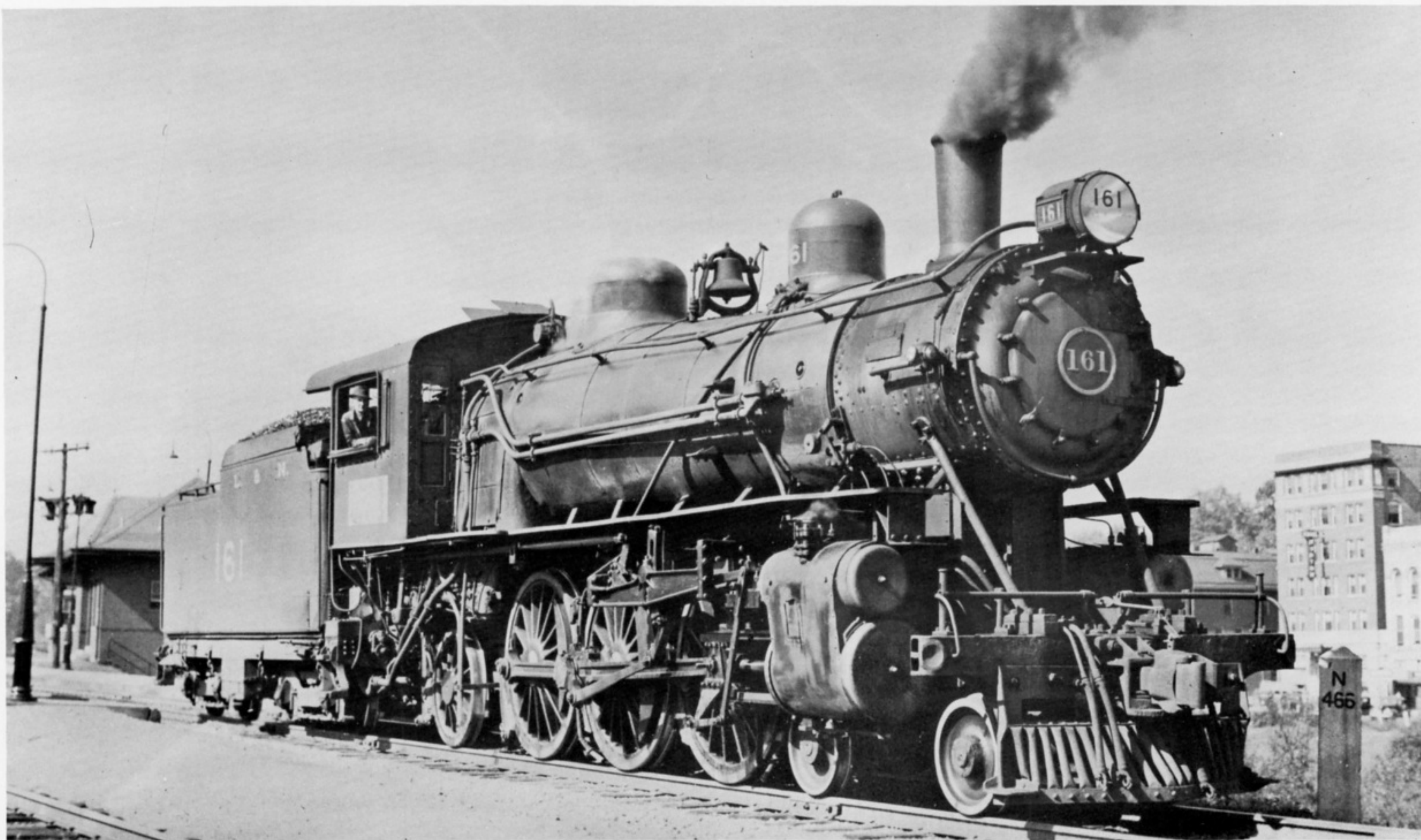


1984 ALL-L&N CALENDER

Published by

LOUISVILLE AND NASHVILLE
HISTORICAL SOCIETY, INC.

P.O. Box 541 Glenwood, IL 60425-0541



Location and date unknown

Martin Brady

The typical L&N steam locomotive in the hearts of many L&N fans: the numbers painted on the headlight, "Old Reliable" emblem on the cab, tender graphics, et. al., even if the engineer does not wear the typical engineer's hat!



Dolton, IL July 15, 1974

John Eagan

Two L&N GP7's in the old number series lead a coal train into the former C&EI yards en route to a train/boat transloader in Chicago. While similar in appearance, the two are from diverse backgrounds. 450 formerly 500, a passenger unit, and 483 formerly NC&StL 715. Units are now 2339 and 2305.



Louisville, KY Date Unknown

Doug Roberts Collection

Pacific 275 was streamlined to handle the Florida passenger trains in the late thirties, prior to the coming of the diesel.

january 1984

sunday	monday	tuesday	wednesday	thursday	friday	saturday
NEW YEAR'S DAY 1	2	3	4	5	6	7
8	9	10	11	12	13	14
15	16	17	18	19	20	21
22	23	24	25	26	27	28
29	30	31				

DECEMBER 1983
 S M T W T F S
 4 5 6 7 8 9 10
 11 12 13 14 15 16 17
 18 19 20 21 22 23 24
 25 26 27 28 29 30 31

FEBRUARY 1984
 S M T W T F S
 1 2 3 4
 5 6 7 8 9 10 11
 12 13 14 15 16 17 18
 19 20 21 22 23 24 25
 26 27 28 29



Paris, KY August 17, 1951

R.D. Acton, Sr./David Oroszi Collection

"Big Emma" digs in with a southbound freight just north of the depot -- sights and sounds to remember!

february 1984

sunday	monday	tuesday	wednesday	thursday	friday	saturday
<div>JANUARY 1984</div> <div> <div>S</div> <div>M</div> <div>T</div> <div>W</div> <div>T</div> <div>F</div> <div>S</div> </div> <div> <div>1</div> <div>2</div> <div>3</div> <div>4</div> <div>5</div> <div>6</div> <div>7</div> </div> <div> <div>8</div> <div>9</div> <div>10</div> <div>11</div> <div>12</div> <div>13</div> <div>14</div> </div> <div> <div>15</div> <div>16</div> <div>17</div> <div>18</div> <div>19</div> <div>20</div> <div>21</div> </div> <div> <div>22</div> <div>23</div> <div>24</div> <div>25</div> <div>26</div> <div>27</div> <div>28</div> </div> <div> <div>29</div> <div>30</div> <div>31</div> </div>	<div>MARCH 1984</div> <div> <div>S</div> <div>M</div> <div>T</div> <div>W</div> <div>T</div> <div>F</div> <div>S</div> </div> <div> <div>1</div> <div>2</div> <div>3</div> </div> <div> <div>4</div> <div>5</div> <div>6</div> <div>7</div> <div>8</div> <div>9</div> <div>10</div> </div> <div> <div>11</div> <div>12</div> <div>13</div> <div>14</div> <div>15</div> <div>16</div> <div>17</div> </div> <div> <div>18</div> <div>19</div> <div>20</div> <div>21</div> <div>22</div> <div>23</div> <div>24</div> </div> <div> <div>25</div> <div>26</div> <div>27</div> <div>28</div> <div>29</div> <div>30</div> <div>31</div> </div>		1	2	3	4
5	6	7	8	9	10	11
<div>LINCOLN'S BIRTHDAY</div> <div>12</div>	13	<div>VALENTINE'S DAY</div> <div>14</div>	15	16	17	18
19	<div>WASHINGTON'S BIRTHDAY OBSERVED</div> <div>20</div>	21	<div>WASHINGTON'S BIRTHDAY</div> <div>22</div>	23	24	25
26	27	28	29			



Memphis, TN October 30, 1935

Roy R. Blackburn/John Eagan Collection

Nashville, Chattanooga & St. Louis 2-8-2 625, a graduate of Baldwin in June, 1913, displays her flanged stack -- a hallmark of The Dixie Line!

march 1984

sunday	monday	tuesday	wednesday	thursday	friday	saturday																																																																																				
<div> <div>FEBRUARY 1984</div> <table> <tr><td>S</td><td>M</td><td>T</td><td>W</td><td>T</td><td>F</td><td>S</td></tr> <tr><td></td><td></td><td></td><td>1</td><td>2</td><td>3</td><td>4</td></tr> <tr><td>5</td><td>6</td><td>7</td><td>8</td><td>9</td><td>10</td><td>11</td></tr> <tr><td>12</td><td>13</td><td>14</td><td>15</td><td>16</td><td>17</td><td>18</td></tr> <tr><td>19</td><td>20</td><td>21</td><td>22</td><td>23</td><td>24</td><td>25</td></tr> <tr><td>26</td><td>27</td><td>28</td><td>29</td><td></td><td></td><td></td></tr> </table> </div>	S	M	T	W	T	F	S				1	2	3	4	5	6	7	8	9	10	11	12	13	14	15	16	17	18	19	20	21	22	23	24	25	26	27	28	29				<div> <div>APRIL 1984</div> <table> <tr><td>S</td><td>M</td><td>T</td><td>W</td><td>T</td><td>F</td><td>S</td></tr> <tr><td>1</td><td>2</td><td>3</td><td>4</td><td>5</td><td>6</td><td>7</td></tr> <tr><td>8</td><td>9</td><td>10</td><td>11</td><td>12</td><td>13</td><td>14</td></tr> <tr><td>15</td><td>16</td><td>17</td><td>18</td><td>19</td><td>20</td><td>21</td></tr> <tr><td>22</td><td>23</td><td>24</td><td>25</td><td>26</td><td>27</td><td>28</td></tr> <tr><td>29</td><td>30</td><td></td><td></td><td></td><td></td><td></td></tr> </table> </div>	S	M	T	W	T	F	S	1	2	3	4	5	6	7	8	9	10	11	12	13	14	15	16	17	18	19	20	21	22	23	24	25	26	27	28	29	30								1	2	3
S	M	T	W	T	F	S																																																																																				
			1	2	3	4																																																																																				
5	6	7	8	9	10	11																																																																																				
12	13	14	15	16	17	18																																																																																				
19	20	21	22	23	24	25																																																																																				
26	27	28	29																																																																																							
S	M	T	W	T	F	S																																																																																				
1	2	3	4	5	6	7																																																																																				
8	9	10	11	12	13	14																																																																																				
15	16	17	18	19	20	21																																																																																				
22	23	24	25	26	27	28																																																																																				
29	30																																																																																									
4	5	6	ASH WEDNESDAY 7	8	9	10																																																																																				
11	12	13	14	15	16	ST. PATRICK'S DAY 17																																																																																				
18	19	20	21	22	23	24																																																																																				
25	26	27	28	29	30	31																																																																																				



Munfordville, KY June 3, 1949

L&N Photo/Bobby Prewitt Collection

The *Pan-American*, led by twin EMD E7's, passes over the Green River on a bridge built atop the original 1859 piers!

april 1984

sunday	monday	tuesday	wednesday	thursday	friday	saturday
1	2	3	4	5	6	7
8	9	10	11	12	13	14
15	16	PASSOVER 17	18	19	GOOD FRIDAY 20	21
EASTER 22	23	24	25	26	27	28
29	30					

MARCH 1984

S	M	T	W	T	F	S
				1	2	3
4	5	6	7	8	9	10
11	12	13	14	15	16	17
18	19	20	21	22	23	24
25	26	27	28	29	30	31

MAY 1984

S	M	T	W	T	F	S
		1	2	3	4	5
6	7	8	9	10	11	12
13	14	15	16	17	18	19
20	21	22	23	24	25	26
27	28	29	30	31		



Loyall, KY February 15, 1968

Ron Flanary

C.V. freight #864 led by FA2 306 fills out tonnage for its train. Coal is the dominant element in this scene, as it is for Eastern Kentucky.

may 1984

sunday	monday	tuesday	wednesday	thursday	friday	saturday																																																																																				
<div> <div>APRIL 1984</div> <table> <tr><td>S</td><td>M</td><td>T</td><td>W</td><td>T</td><td>F</td><td>S</td></tr> <tr><td>1</td><td>2</td><td>3</td><td>4</td><td>5</td><td>6</td><td>7</td></tr> <tr><td>8</td><td>9</td><td>10</td><td>11</td><td>12</td><td>13</td><td>14</td></tr> <tr><td>15</td><td>16</td><td>17</td><td>18</td><td>19</td><td>20</td><td>21</td></tr> <tr><td>22</td><td>23</td><td>24</td><td>25</td><td>26</td><td>27</td><td>28</td></tr> <tr><td>29</td><td>30</td><td></td><td></td><td></td><td></td><td></td></tr> </table> </div>	S	M	T	W	T	F	S	1	2	3	4	5	6	7	8	9	10	11	12	13	14	15	16	17	18	19	20	21	22	23	24	25	26	27	28	29	30						<div> <div>JUNE 1984</div> <table> <tr><td>S</td><td>M</td><td>T</td><td>W</td><td>T</td><td>F</td><td>S</td></tr> <tr><td></td><td></td><td></td><td></td><td>1</td><td>2</td><td></td></tr> <tr><td>3</td><td>4</td><td>5</td><td>6</td><td>7</td><td>8</td><td>9</td></tr> <tr><td>10</td><td>11</td><td>12</td><td>13</td><td>14</td><td>15</td><td>16</td></tr> <tr><td>17</td><td>18</td><td>19</td><td>20</td><td>21</td><td>22</td><td>23</td></tr> <tr><td>24</td><td>25</td><td>26</td><td>27</td><td>28</td><td>29</td><td>30</td></tr> </table> </div>	S	M	T	W	T	F	S					1	2		3	4	5	6	7	8	9	10	11	12	13	14	15	16	17	18	19	20	21	22	23	24	25	26	27	28	29	30	1	2	3	4	5
S	M	T	W	T	F	S																																																																																				
1	2	3	4	5	6	7																																																																																				
8	9	10	11	12	13	14																																																																																				
15	16	17	18	19	20	21																																																																																				
22	23	24	25	26	27	28																																																																																				
29	30																																																																																									
S	M	T	W	T	F	S																																																																																				
				1	2																																																																																					
3	4	5	6	7	8	9																																																																																				
10	11	12	13	14	15	16																																																																																				
17	18	19	20	21	22	23																																																																																				
24	25	26	27	28	29	30																																																																																				
6	7	8	9	10	11	12																																																																																				
MOTHER'S DAY 13	14	15	16	17	18	ARMED FORCES DAY 19																																																																																				
20	21	22	23	24	25	26																																																																																				
27	MEMORIAL DAY OBSERVED 28	29	MEMORIAL DAY 30	31																																																																																						



Louisville, KY April 15, 1966

Ron Flanary

The *Pan-American* has E6A 777 and C&O's Louisville section of the *George Washington* has E8A 4027 - both compare notes at Louisville Union Station awaiting departure times.

june 1984

sunday	monday	tuesday	wednesday	thursday	friday	saturday																																																																																				
<div> <div>MAY</div> <div>1984</div> <table> <tr><td>S</td><td>M</td><td>T</td><td>W</td><td>T</td><td>F</td><td>S</td></tr> <tr><td></td><td></td><td>1</td><td>2</td><td>3</td><td>4</td><td>5</td></tr> <tr><td>6</td><td>7</td><td>8</td><td>9</td><td>10</td><td>11</td><td>12</td></tr> <tr><td>13</td><td>14</td><td>15</td><td>16</td><td>17</td><td>18</td><td>19</td></tr> <tr><td>20</td><td>21</td><td>22</td><td>23</td><td>24</td><td>25</td><td>26</td></tr> <tr><td>27</td><td>28</td><td>29</td><td>30</td><td>31</td><td></td><td></td></tr> </table> </div>	S	M	T	W	T	F	S			1	2	3	4	5	6	7	8	9	10	11	12	13	14	15	16	17	18	19	20	21	22	23	24	25	26	27	28	29	30	31			<div> <div>JULY</div> <div>1984</div> <table> <tr><td>S</td><td>M</td><td>T</td><td>W</td><td>T</td><td>F</td><td>S</td></tr> <tr><td>1</td><td>2</td><td>3</td><td>4</td><td>5</td><td>6</td><td>7</td></tr> <tr><td>8</td><td>9</td><td>10</td><td>11</td><td>12</td><td>13</td><td>14</td></tr> <tr><td>15</td><td>16</td><td>17</td><td>18</td><td>19</td><td>20</td><td>21</td></tr> <tr><td>22</td><td>23</td><td>24</td><td>25</td><td>26</td><td>27</td><td>28</td></tr> <tr><td>29</td><td>30</td><td>31</td><td></td><td></td><td></td><td></td></tr> </table> </div>	S	M	T	W	T	F	S	1	2	3	4	5	6	7	8	9	10	11	12	13	14	15	16	17	18	19	20	21	22	23	24	25	26	27	28	29	30	31								1	2
S	M	T	W	T	F	S																																																																																				
		1	2	3	4	5																																																																																				
6	7	8	9	10	11	12																																																																																				
13	14	15	16	17	18	19																																																																																				
20	21	22	23	24	25	26																																																																																				
27	28	29	30	31																																																																																						
S	M	T	W	T	F	S																																																																																				
1	2	3	4	5	6	7																																																																																				
8	9	10	11	12	13	14																																																																																				
15	16	17	18	19	20	21																																																																																				
22	23	24	25	26	27	28																																																																																				
29	30	31																																																																																								
3	4	5	6	7	8	9																																																																																				
10	11	12	13	<div> <div>FLAG DAY</div> </div> 14	15	16																																																																																				
<div> <div>FATHER'S DAY</div> </div> 17	18	19	20	21	22	23																																																																																				
24	25	26	27	28	29	30																																																																																				



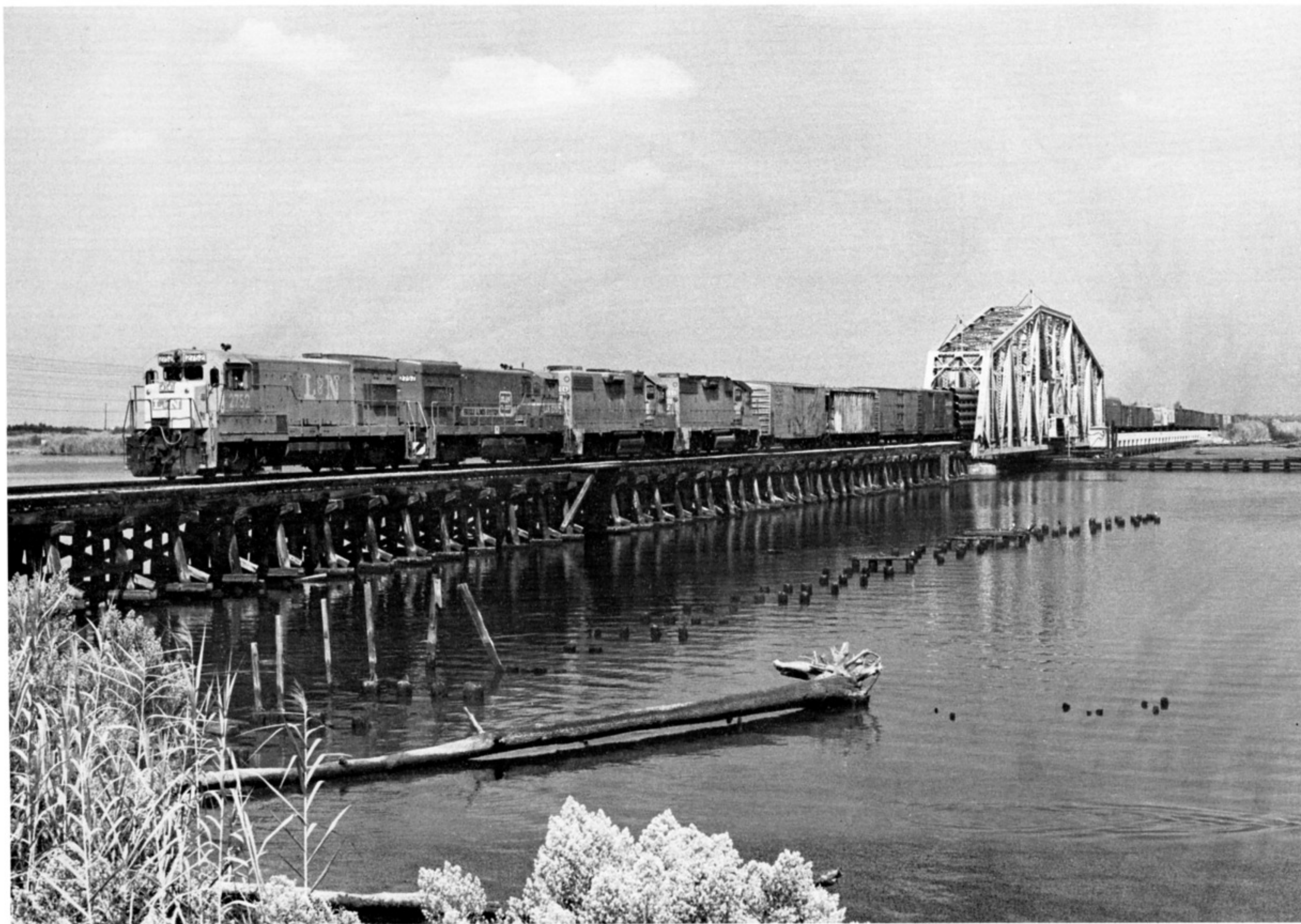
Tacoma, VA May 27, 1982

David Oroszi

You're aboard an L&N westbound as an eastbound led by SD40-2 1261 blasts by - big time railroading!

july 1984

sunday	monday	tuesday	wednesday	thursday	friday	saturday																																																																																			
CANADA DAY 1	2	3	INDEPENDENCE DAY 4	5	6	7																																																																																			
8	9	10	11	12	13	14																																																																																			
15	16	17	18	19	20	21																																																																																			
22	23	24	25	26	27	28																																																																																			
29	30	31		<div><div>JUNE1984</div><table><tr><td>S</td><td>M</td><td>T</td><td>W</td><td>T</td><td>F</td><td>S</td></tr><tr><td></td><td></td><td></td><td></td><td></td><td>1</td><td>2</td></tr><tr><td>3</td><td>4</td><td>5</td><td>6</td><td>7</td><td>8</td><td>9</td></tr><tr><td>10</td><td>11</td><td>12</td><td>13</td><td>14</td><td>15</td><td>16</td></tr><tr><td>17</td><td>18</td><td>19</td><td>20</td><td>21</td><td>22</td><td>23</td></tr><tr><td>24</td><td>25</td><td>26</td><td>27</td><td>28</td><td>29</td><td>30</td></tr></table></div> <div><div>AUGUST1984</div><table><tr><td>S</td><td>M</td><td>T</td><td>W</td><td>T</td><td>F</td><td>S</td></tr><tr><td></td><td></td><td></td><td></td><td>1</td><td>2</td><td>3</td></tr><tr><td>4</td><td>5</td><td>6</td><td>7</td><td>8</td><td>9</td><td>10</td></tr><tr><td>11</td><td>12</td><td>13</td><td>14</td><td>15</td><td>16</td><td>17</td></tr><tr><td>18</td><td>19</td><td>20</td><td>21</td><td>22</td><td>23</td><td>24</td></tr><tr><td>25</td><td>26</td><td>27</td><td>28</td><td>29</td><td>30</td><td>31</td></tr></table></div>	S	M	T	W	T	F	S						1	2	3	4	5	6	7	8	9	10	11	12	13	14	15	16	17	18	19	20	21	22	23	24	25	26	27	28	29	30	S	M	T	W	T	F	S					1	2	3	4	5	6	7	8	9	10	11	12	13	14	15	16	17	18	19	20	21	22	23	24	25	26	27	28	29	30	31	
S	M	T	W	T	F	S																																																																																			
					1	2																																																																																			
3	4	5	6	7	8	9																																																																																			
10	11	12	13	14	15	16																																																																																			
17	18	19	20	21	22	23																																																																																			
24	25	26	27	28	29	30																																																																																			
S	M	T	W	T	F	S																																																																																			
				1	2	3																																																																																			
4	5	6	7	8	9	10																																																																																			
11	12	13	14	15	16	17																																																																																			
18	19	20	21	22	23	24																																																																																			
25	26	27	28	29	30	31																																																																																			



Mobile, AL October 5, 1981

The quiet of the Chickasaw River is interrupted momentarily by the passing of L&N train #401.

David Oroszi

august 1984

sunday	monday	tuesday	wednesday	thursday	friday	saturday																																																																																				
<div> <div>JULY 1984</div> <table> <tr><td>S</td><td>M</td><td>T</td><td>W</td><td>T</td><td>F</td><td>S</td></tr> <tr><td>1</td><td>2</td><td>3</td><td>4</td><td>5</td><td>6</td><td>7</td></tr> <tr><td>8</td><td>9</td><td>10</td><td>11</td><td>12</td><td>13</td><td>14</td></tr> <tr><td>15</td><td>16</td><td>17</td><td>18</td><td>19</td><td>20</td><td>21</td></tr> <tr><td>22</td><td>23</td><td>24</td><td>25</td><td>26</td><td>27</td><td>28</td></tr> <tr><td>29</td><td>30</td><td>31</td><td></td><td></td><td></td><td></td></tr> </table> </div> <div> <div>SEPTEMBER 1984</div> <table> <tr><td>S</td><td>M</td><td>T</td><td>W</td><td>T</td><td>F</td><td>S</td></tr> <tr><td></td><td></td><td></td><td></td><td></td><td></td><td>1</td></tr> <tr><td>2</td><td>3</td><td>4</td><td>5</td><td>6</td><td>7</td><td>8</td></tr> <tr><td>9</td><td>10</td><td>11</td><td>12</td><td>13</td><td>14</td><td>15</td></tr> <tr><td>16</td><td>17</td><td>18</td><td>19</td><td>20</td><td>21</td><td>22</td></tr> <tr><td>23</td><td>24</td><td>25</td><td>26</td><td>27</td><td>28</td><td>29</td></tr> </table> </div>	S	M	T	W	T	F	S	1	2	3	4	5	6	7	8	9	10	11	12	13	14	15	16	17	18	19	20	21	22	23	24	25	26	27	28	29	30	31					S	M	T	W	T	F	S							1	2	3	4	5	6	7	8	9	10	11	12	13	14	15	16	17	18	19	20	21	22	23	24	25	26	27	28	29			1	2	3	4
S	M	T	W	T	F	S																																																																																				
1	2	3	4	5	6	7																																																																																				
8	9	10	11	12	13	14																																																																																				
15	16	17	18	19	20	21																																																																																				
22	23	24	25	26	27	28																																																																																				
29	30	31																																																																																								
S	M	T	W	T	F	S																																																																																				
						1																																																																																				
2	3	4	5	6	7	8																																																																																				
9	10	11	12	13	14	15																																																																																				
16	17	18	19	20	21	22																																																																																				
23	24	25	26	27	28	29																																																																																				
5	6	7	8	9	10	11																																																																																				
12	13	14	15	16	17	18																																																																																				
19	20	21	22	23	24	25																																																																																				
26	27	28	29	30	31																																																																																					



Worthville, KY May 20, 1979

David Oroszi

With a lashup of four modern hood units (B23-7, U23B, GP30, U23B) this Cincinnati-bound train will have no trouble keeping it's schedule!

october 1984

sunday	monday	tuesday	wednesday	thursday	friday	saturday																																																																																				
	1	2	3	4	5	YOM KIPPUR 6																																																																																				
7	COLUMBUS DAY OBSERVED 8	9	10	11	COLUMBUS DAY 12	13																																																																																				
14	15	16	17	18	19	20																																																																																				
21	22	23	24	25	26	27																																																																																				
28	29	30	HALLOWEEN 31	<div>SEPTEMBER1984</div> <table><tr><td>S</td><td>M</td><td>T</td><td>W</td><td>T</td><td>F</td><td>S</td></tr><tr><td></td><td></td><td></td><td></td><td></td><td></td><td>1</td></tr><tr><td>2</td><td>3</td><td>4</td><td>5</td><td>6</td><td>7</td><td>8</td></tr><tr><td>9</td><td>10</td><td>11</td><td>12</td><td>13</td><td>14</td><td>15</td></tr><tr><td>16</td><td>17</td><td>18</td><td>19</td><td>20</td><td>21</td><td>22</td></tr><tr><td>23</td><td>24</td><td>25</td><td>26</td><td>27</td><td>28</td><td>29</td></tr></table>		S	M	T	W	T	F	S							1	2	3	4	5	6	7	8	9	10	11	12	13	14	15	16	17	18	19	20	21	22	23	24	25	26	27	28	29	<div>NOVEMBER1984</div> <table><tr><td>S</td><td>M</td><td>T</td><td>W</td><td>T</td><td>F</td><td>S</td></tr><tr><td></td><td></td><td></td><td></td><td>1</td><td>2</td><td>3</td></tr><tr><td>4</td><td>5</td><td>6</td><td>7</td><td>8</td><td>9</td><td>10</td></tr><tr><td>11</td><td>12</td><td>13</td><td>14</td><td>15</td><td>16</td><td>17</td></tr><tr><td>18</td><td>19</td><td>20</td><td>21</td><td>22</td><td>23</td><td>24</td></tr><tr><td>25</td><td>26</td><td>27</td><td>28</td><td>29</td><td>30</td><td></td></tr></table>	S	M	T	W	T	F	S					1	2	3	4	5	6	7	8	9	10	11	12	13	14	15	16	17	18	19	20	21	22	23	24	25	26	27	28	29	30	
S	M	T	W	T	F	S																																																																																				
						1																																																																																				
2	3	4	5	6	7	8																																																																																				
9	10	11	12	13	14	15																																																																																				
16	17	18	19	20	21	22																																																																																				
23	24	25	26	27	28	29																																																																																				
S	M	T	W	T	F	S																																																																																				
				1	2	3																																																																																				
4	5	6	7	8	9	10																																																																																				
11	12	13	14	15	16	17																																																																																				
18	19	20	21	22	23	24																																																																																				
25	26	27	28	29	30																																																																																					



Williamsburg, KY May 6, 1982

David Oroszi

Carrying the shipper owned train one step further, Shamrock Coal had a group of EMD SD40-2's built to L&N specs to provide power for their coal unit trains from Eastern Kentucky to southeastern markets.

november 1984

sunday	monday	tuesday	wednesday	thursday	friday	saturday																																																																																				
<div> <div>OCTOBER 1984</div> <table> <tr><td>S</td><td>M</td><td>T</td><td>W</td><td>T</td><td>F</td><td>S</td></tr> <tr><td>1</td><td>2</td><td>3</td><td>4</td><td>5</td><td>6</td><td></td></tr> <tr><td>7</td><td>8</td><td>9</td><td>10</td><td>11</td><td>12</td><td>13</td></tr> <tr><td>14</td><td>15</td><td>16</td><td>17</td><td>18</td><td>19</td><td>20</td></tr> <tr><td>21</td><td>22</td><td>23</td><td>24</td><td>25</td><td>26</td><td>27</td></tr> <tr><td>28</td><td>29</td><td>30</td><td>31</td><td></td><td></td><td></td></tr> </table> </div>	S	M	T	W	T	F	S	1	2	3	4	5	6		7	8	9	10	11	12	13	14	15	16	17	18	19	20	21	22	23	24	25	26	27	28	29	30	31				<div> <div>DECEMBER 1984</div> <table> <tr><td>S</td><td>M</td><td>T</td><td>W</td><td>T</td><td>F</td><td>S</td></tr> <tr><td></td><td></td><td></td><td></td><td></td><td></td><td>1</td></tr> <tr><td>2</td><td>3</td><td>4</td><td>5</td><td>6</td><td>7</td><td>8</td></tr> <tr><td>9</td><td>10</td><td>11</td><td>12</td><td>13</td><td>14</td><td>15</td></tr> <tr><td>16</td><td>17</td><td>18</td><td>19</td><td>20</td><td>21</td><td>22</td></tr> <tr><td>23</td><td>24</td><td>25</td><td>26</td><td>27</td><td>28</td><td>29</td></tr> </table> </div>	S	M	T	W	T	F	S							1	2	3	4	5	6	7	8	9	10	11	12	13	14	15	16	17	18	19	20	21	22	23	24	25	26	27	28	29			1	2	3
S	M	T	W	T	F	S																																																																																				
1	2	3	4	5	6																																																																																					
7	8	9	10	11	12	13																																																																																				
14	15	16	17	18	19	20																																																																																				
21	22	23	24	25	26	27																																																																																				
28	29	30	31																																																																																							
S	M	T	W	T	F	S																																																																																				
						1																																																																																				
2	3	4	5	6	7	8																																																																																				
9	10	11	12	13	14	15																																																																																				
16	17	18	19	20	21	22																																																																																				
23	24	25	26	27	28	29																																																																																				
4	5	ELECTION DAY 6	7	8	9	10																																																																																				
VETERANS DAY 11	12	13	14	15	16	17																																																																																				
18	19	20	21	THANKSGIVING DAY 22	23	24																																																																																				
25	26	27	28	29	30																																																																																					



Riverdale, IL September 1, 1983

John Eagan

The L&N is now merged into the Seaboard System - itself a component of the Chessie-Seaboard (CSX) Corporation. New power from both roads is represented by SBD SD50 8520 (built to L&N specs) and CSy GP15T 1511 (built to C&O specs.)

december 1984

sunday	monday	tuesday	wednesday	thursday	friday	saturday																																																																																				
<div>NOVEMBER 1984</div> <table> <tr><td>S</td><td>M</td><td>T</td><td>W</td><td>T</td><td>F</td><td>S</td></tr> <tr><td></td><td></td><td></td><td></td><td>1</td><td>2</td><td>3</td></tr> <tr><td>4</td><td>5</td><td>6</td><td>7</td><td>8</td><td>9</td><td>10</td></tr> <tr><td>11</td><td>12</td><td>13</td><td>14</td><td>15</td><td>16</td><td>17</td></tr> <tr><td>18</td><td>19</td><td>20</td><td>21</td><td>22</td><td>23</td><td>24</td></tr> <tr><td>25</td><td>26</td><td>27</td><td>28</td><td>29</td><td>30</td><td></td></tr> </table>	S	M	T	W	T	F	S					1	2	3	4	5	6	7	8	9	10	11	12	13	14	15	16	17	18	19	20	21	22	23	24	25	26	27	28	29	30		<div>JANUARY 1985</div> <table> <tr><td>S</td><td>M</td><td>T</td><td>W</td><td>T</td><td>F</td><td>S</td></tr> <tr><td></td><td></td><td>1</td><td>2</td><td>3</td><td>4</td><td>5</td></tr> <tr><td>6</td><td>7</td><td>8</td><td>9</td><td>10</td><td>11</td><td>12</td></tr> <tr><td>13</td><td>14</td><td>15</td><td>16</td><td>17</td><td>18</td><td>19</td></tr> <tr><td>20</td><td>21</td><td>22</td><td>23</td><td>24</td><td>25</td><td>26</td></tr> <tr><td>27</td><td>28</td><td>29</td><td>30</td><td>31</td><td></td><td></td></tr> </table>	S	M	T	W	T	F	S			1	2	3	4	5	6	7	8	9	10	11	12	13	14	15	16	17	18	19	20	21	22	23	24	25	26	27	28	29	30	31							1
S	M	T	W	T	F	S																																																																																				
				1	2	3																																																																																				
4	5	6	7	8	9	10																																																																																				
11	12	13	14	15	16	17																																																																																				
18	19	20	21	22	23	24																																																																																				
25	26	27	28	29	30																																																																																					
S	M	T	W	T	F	S																																																																																				
		1	2	3	4	5																																																																																				
6	7	8	9	10	11	12																																																																																				
13	14	15	16	17	18	19																																																																																				
20	21	22	23	24	25	26																																																																																				
27	28	29	30	31																																																																																						
2	3	4	5	6	7	8																																																																																				
9	10	11	12	13	14	15																																																																																				
16	17	18	HANUKKAH 19	20	21	22																																																																																				
23	24	CHRISTMAS DAY 25	26	27	28	29																																																																																				
30	31																																																																																									

EXECUTIVE BOARD

John T. Eagan, Jr.....	<i>President</i>
Gib Allbach	<i>Vice President</i>
Beata E. Eagan	<i>Secretary-Treasurer</i>
Jim Mirabelli.....	<i>Director</i>
Herb C. Duncan.....	<i>Director</i>
David H. Cooper	<i>Director</i>
Edward Hawkins	<i>Director</i>

The Louisville and Nashville Railroad Historical Society, Inc. was organized in late 1982 with the purpose of obtaining, organizing, preserving and sharing information and material relating to the L&N for it's membership and others. The society's area of interest includes not only the L&N but component roads Nashville, Chattanooga & St. Louis; Chicago and Eastern Illinois; Tennessee Central; Monon; Clinchfield; Family Lines and Seaboard System. The society is an Illinois not-for-profit educational corporation. Memberships are available to anyone interested in the L&N. The society publication "THE DIXIE LINE" is published quarterly and carries news and information of interest to the members. To request a membership application, send a stamped, self-addressed envelope to the following address:



LOUISVILLE & NASHVILLE
HISTORICAL SOCIETY

P.O. BOX 541, GLENWOOD, IL 60425